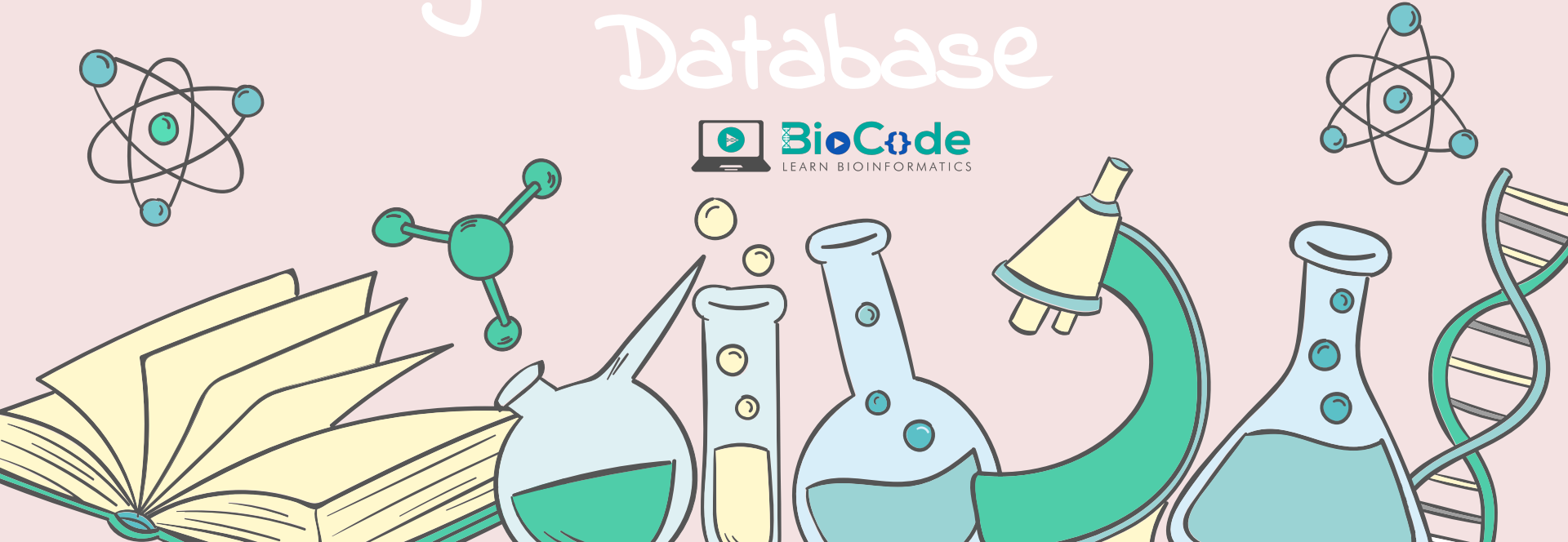


UniProt Peptide Search - Find Regions within UniProt Database



BioCode
LEARN BIOINFORMATICS



Content



- Introduction to UniProt Peptide Search
- Benefits for Research
- Analyzes
- Input & Output
- Parameters
- Conclusion





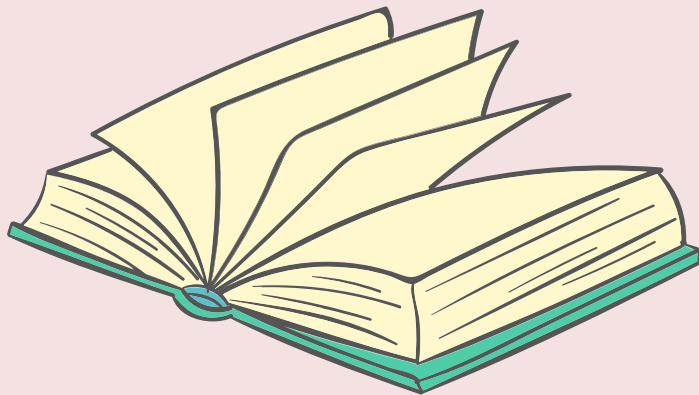
Introduction

Peptide Search is a UniProt tool utilized for searching a particular set of amino acids or particular set of regions within a particular protein to search against the entire UniProt database.





Peptide search tool finds matches for a specific peptide sequence is important for protein identification in proteomics studies. It is also important for sequence-based protein retrieval as peptide sequences.



Analyzes

Protein Retrieval

Sequence-based protein retrieval as peptide sequences can often be too short for effective BLAST search.

Finding Matches

Finding matches for a specific peptide sequence is important for protein identification.

Protein information

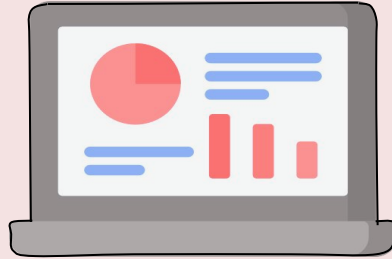
UniProt consortium has hosted a Peptide match service as the peptide search.



Input & Output

Input

Peptide search input is a peptide sequence at least three amino acids long.



Output

The Peptide search results display proteins that have exact match to the query sequence in a table with filters

Parameters



1st

Form Field

Peptide sequences, each more than two amino acids long

2nd

Taxon

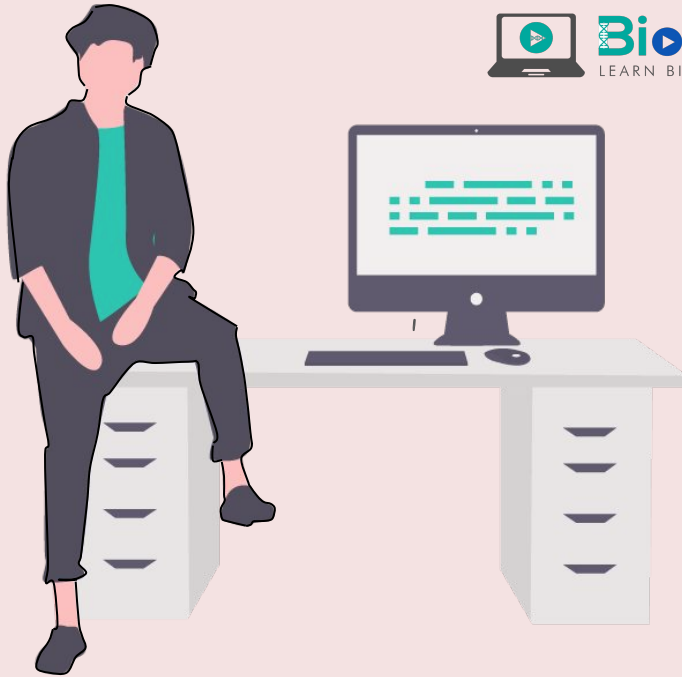
choose to restrict the search to a specific taxonomic group

3rd

Isoleucine & Leucine

Specify the tool to treat Isoleucine and Leucine as equivalent

Conclusion



The Protein Information Resource, a UniProt consortium partner, has hosted a Peptide match service for over a decade. This popular tool is now also available directly through the UniProt interface.