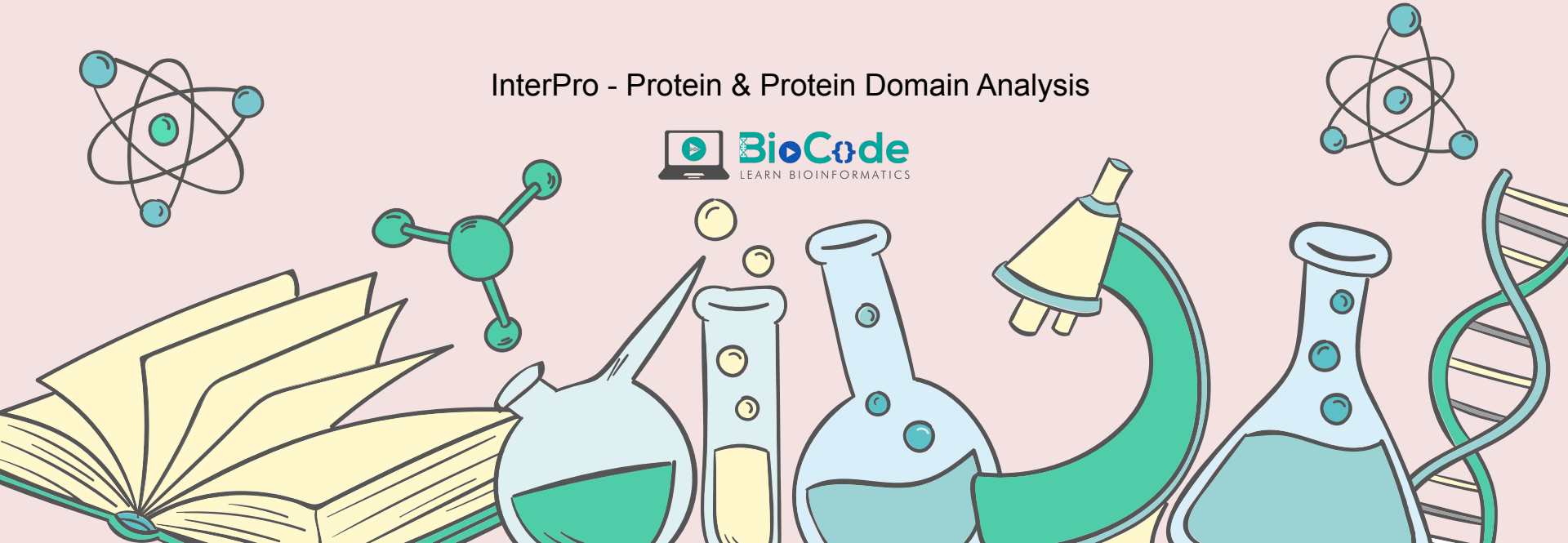


InterPro Database

InterPro - Protein & Protein Domain Analysis





Content



- Introduction to InterPro
- Benefits for Research
- Constitutes
- Input & Output
- Analysis
- Conclusion





Introduction

InterPro is a resource that provides functional analysis of protein sequences and provides protein family, domain and functionality of protein information. The member databases also provide such information.

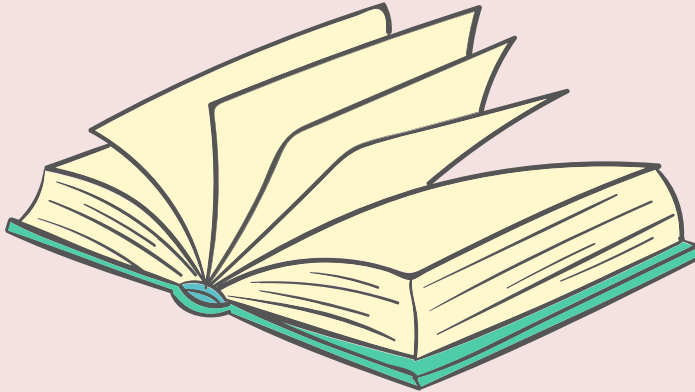


BioCode
LEARN BIOINFORMATICS

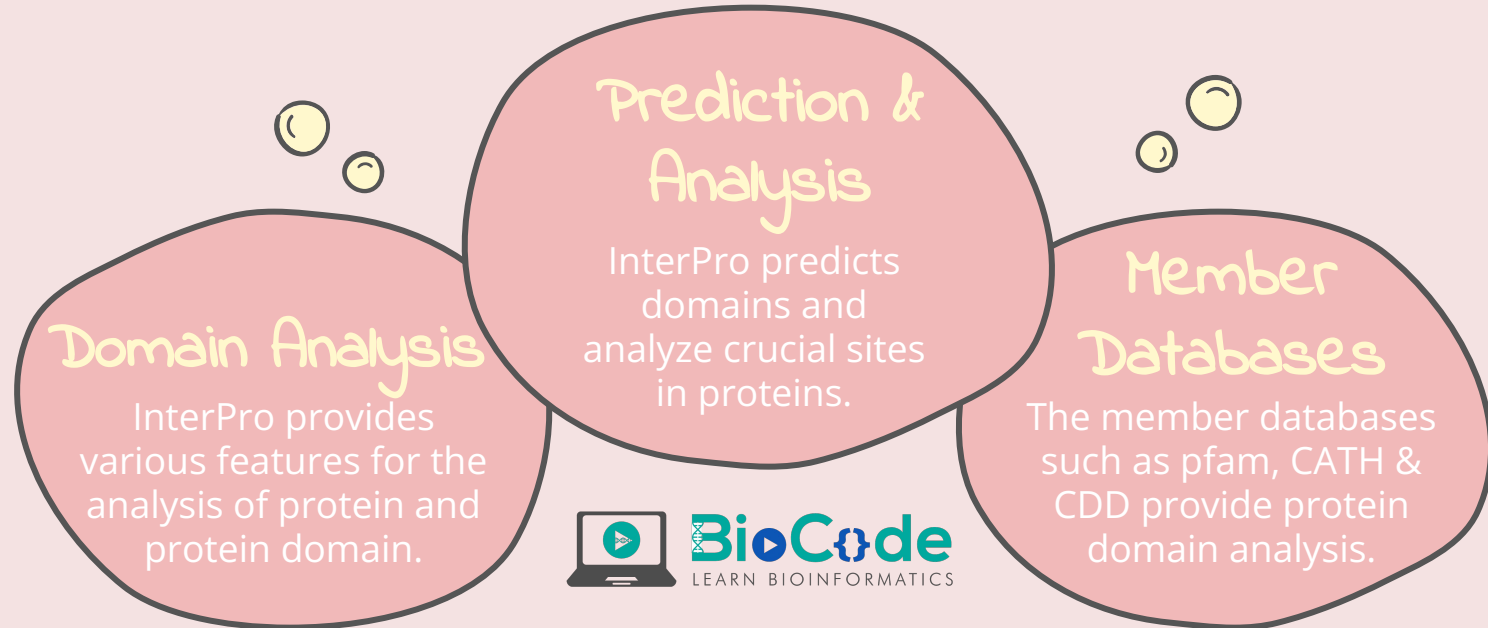


||

InterPro combines signatures from multiple, diverse databases into a single searchable resource, reducing redundancy and helping users interpret their sequence analysis results.



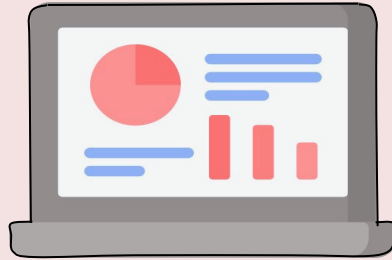
Constitutes



Input & Output

Input

InterPro allows to search the query by sequence (FASTA), text search (protein names) or domain architecture.



Output

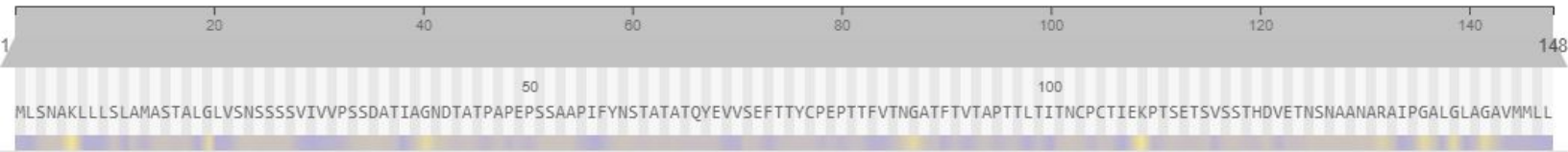
InterPro fetches search results itself and from member databases and provides list of the latest entries.

InterPro fetches search results and from member databases and provides list of the latest entries.

Entry matches to this protein

Options

Export



Family



Predictions

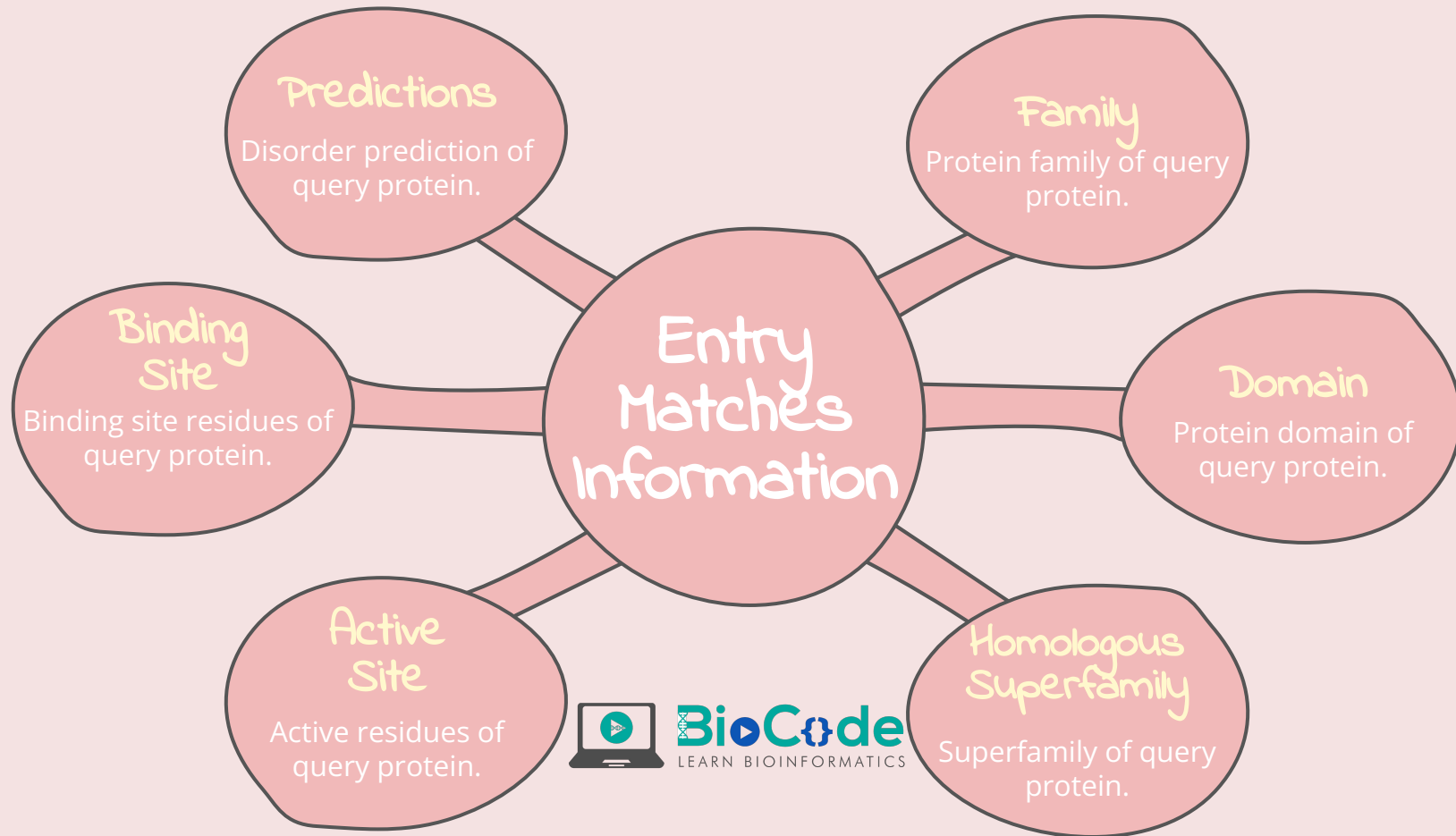


IPR038843
PTHR35523

SIGNAL_PEPTIDE (1)
SIGNAL_PEPTIDE_H_REGION (2)
SIGNAL_PEPTIDE_C_REGION (3)
SIGNAL_PEPTIDE_N_REGION (4)
SignalP-TM (5)
SignalP-noTM (6)
SignalP-noTM (7)



BioCode
LEARN BIOINFORMATICS



BioCode
LEARN BIOINFORMATICS

Query Search



1st

Query

InterPro query can be search by FASTA sequence or by text as protein, domain names, keywords or GO terms.

2nd

Results

InterPro provides graphical representation, GO terms information and hyperlinks to member databases.

Conclusion



InterPro combines signatures from multiple, diverse databases into a single searchable resource, reducing redundancy and helping users interpret their sequence analysis results. InterPro provides links to integrated databases for protein & protein domain analysis.